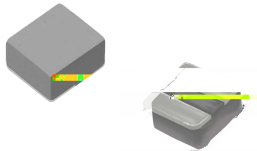


# MDTA Series

## SMD Low Profile High Current Molded Inductor

### Size 160808



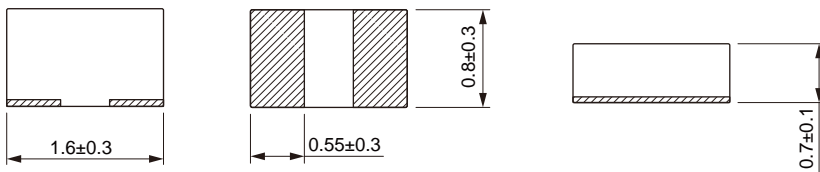
#### FEATURES

- High current, low DCR,
- 
- 
- 
- 
- 

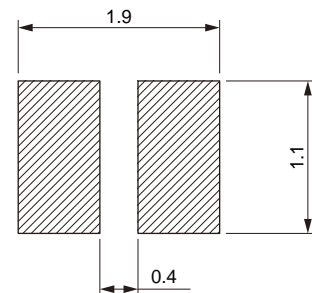
#### APPLICATION

- 
- 
- HVAC
- 
- 
- 

#### Dimensions: [mm]



#### Land Pattern: [mm]



#### Electrical Properties:

Part No	Inductance @ 100KHz/1V	Tolerance	Temperature Rise Current Typ. (A)	Temperature Rise Current Max. (A)	Current Typ. (A)	Current Max. (A)	DC Resistance Typ.	DC Resistance Max.
MDTA160808-R22M		±20%						40
MDTA160808-R47M		±20%					80	100
		±20%						110
MDTA160808-R68M		±20%						
MDTA160808-1R0M		±20%					180	200

Saturation Current will cause L to drop approximately 30%

Temperature Rise Current: The actual value of DC current when the temperature rise is  $\Delta T=40^{\circ}\text{C}$

## Typical Electrical Characteristics:

