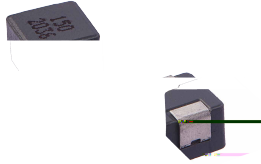


MD Series

SMD Low Profile High Current Molded Inductor

Size 7030



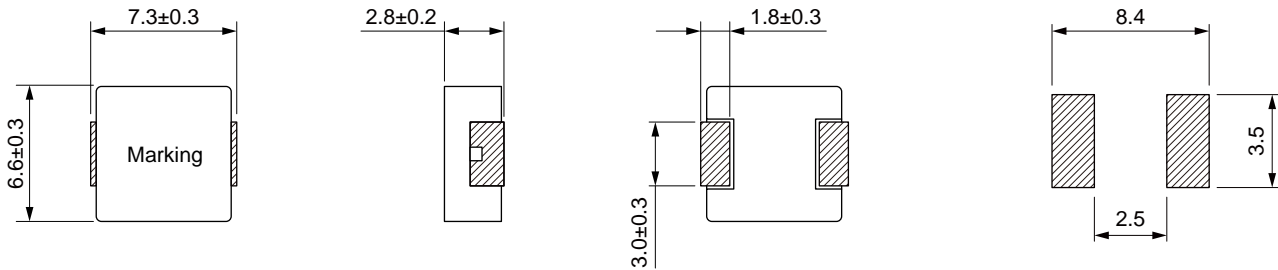
CHARACTERISTICS

- Molded type
- High saturation current due to CIP material
- Nature air gap and no acoustic noise
- Different sizes available
- Quantity: 1000pcs

APPLICATION

- High current DC/DC converter
- LC filter

Dimensions: [mm]



Electrical Properties:

Part No	Inductance @ 100KHz/1V	Tolerance	Temperature Rise Current Typ. (A)	current Typ. (A)	DC Resistance Typ.	DC Resistance Max.
MD7030-R10N	0.10	±30%	32.5	60.0	1.2	1.7
MD7030-R22N	0.22	±30%	23.0	40.0	2.1	2.8
MD7030-R33M	0.33	±20%	20.0	32.0	3.5	3.9
MD7030-R36M	0.36	±20%	19.0	32.0	3.6	4.2
MD7030-R47M	0.47	±20%	17.5	26.0	4.0	4.2
MD7030-R56M	0.56	±20%	16.5	25.5	4.7	5.0
MD7030-R68M	0.68	±20%	15.5	25.0	4.8	5.5
MD7030-R82M	0.82	±20%	13.0	24.0	6.7	8.0
MD7030-1R0M	1.00	±20%	11.0	22.0	8.3	10
MD7030-1R5M	1.50	±20%	9.00	18.0	13	15
MD7030-2R2M	2.20	±20%	8.00	14.0	18	20
MD7030-3R3M	3.30	±20%	6.00	13.5	28	30
MD7030-4R7M	4.70	±20%	5.50	10.0	37	40
MD7030-5R6M	5.60	±20%	5.00	9.00	43	48
MD7030-6R8M	6.80	±20%	4.50	8.00	54	60
MD7030-8R2M	8.20	±20%	4.00	7.50	64	68



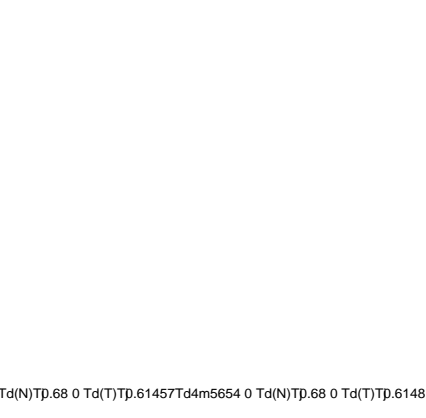
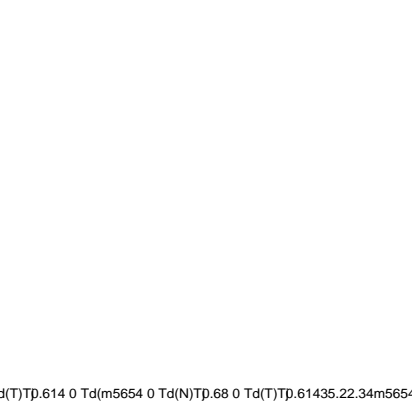
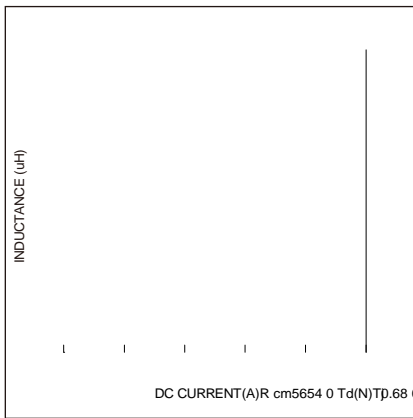
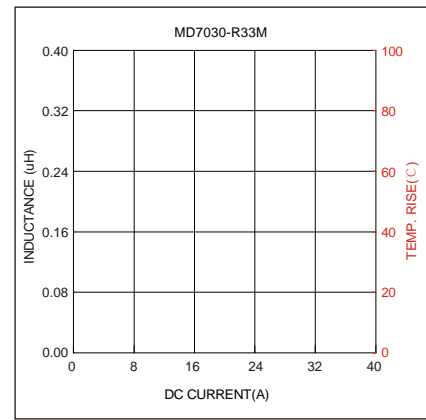
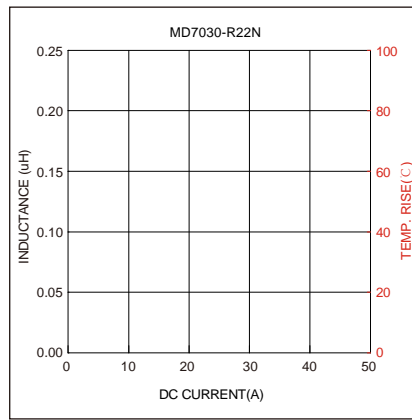
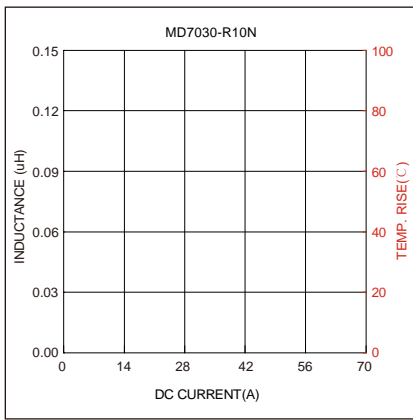
Part No	Inductance @ 100KHz/1V	Tolerance	Temperature Rise Current Typ. (A)	current Typ. (A)	DC Resistance Typ.	DC Resistance Max.
MD7030-100M	10.0	±20%	3.50	6.00	75	85
MD7030-150M	15.0	±20%	3.00	4.00	107	123
MD7030-220M	22.0	±20%	2.00	3.50	165	190

Operating temperature: -40°C ~ +125°C

Temperature rise current: The actual value of DC current when the temperature rise is T40°C

Saturation Current will cause L to drop approximately 30%

Typical Electrical Characteristics:



Typical Electrical Characteristics:

