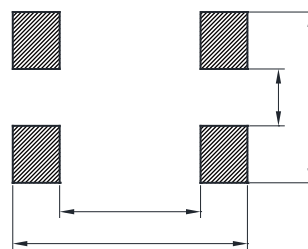
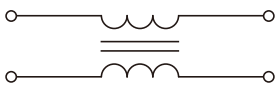
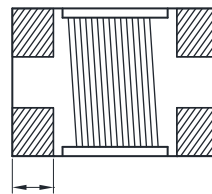
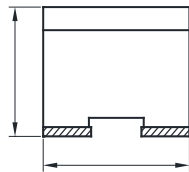
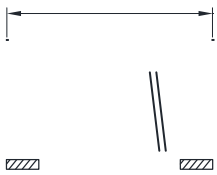
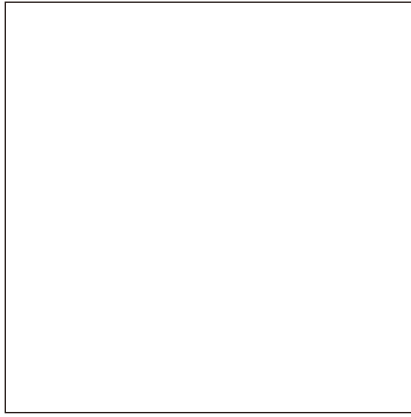
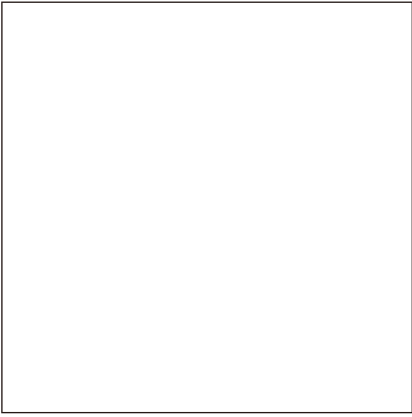


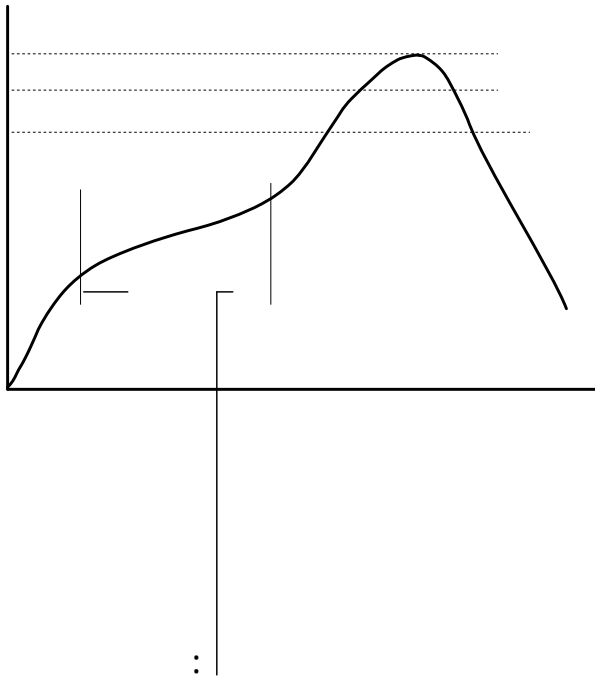
Impedance variation: Extensive lineup are available for compatibility with various usages
 Common mode filters for Signal Line
 Operating temperature range: -40 to +125
 AEC-Q200 qualified
 Quantity: 500pcs

Radiated noise suppression for car multimedia interfaces (MOST, USB2.0, IDB-1394, etc.)

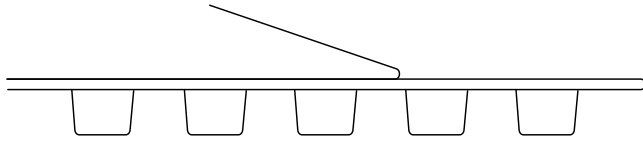


Part No	Z @ 100 MHz Min.	Z @ 100 MHz Typ.	I _R Max.	R _{DC} Max.	V _{DC} Max. (V)	IR Min.
BCMA4532-900N	68	90	4000	0.050	50	10M
BCMA4532-231N	173	230	3500	0.050	50	10M
BCMA4532-601N	450	600	2500	0.060	50	10M
BCMA4532-901N	650	900	2300	0.070	50	10M
BCMA4532-142N	1000	1400	2000	0.100	50	10M
BCMA4532-282N	2100	2800	900	0.350	50	10M

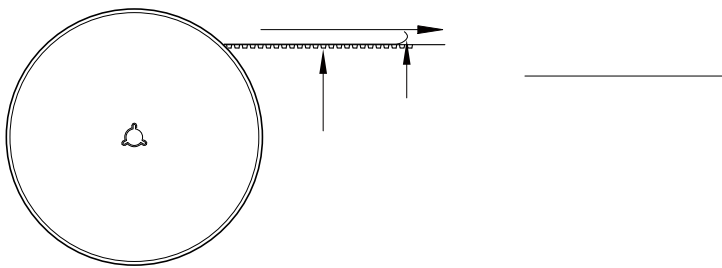




BCMA4532	3.6 ± 0.1	4.9 ± 0.1	1.5 ± 0.1	4.0 ± 0.1	8.0 ± 0.1	12.0 ± 0.3	3.0 ± 0.1	1.75 ± 0.1	0.26 ± 0.05



:



:

•

•

•

•

•

•

•

•